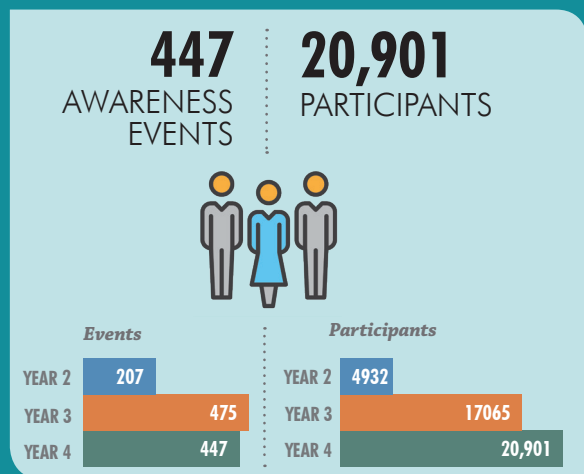


Project AWARE Kentucky

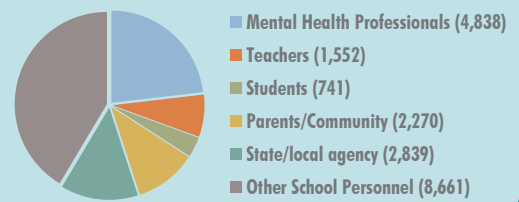
YEAR FOUR Highlights October 2017—September 2018

Increasing Awareness

AWARE staff (SEA and LEAs) conducted **447 awareness events** and reached almost **21,000 participants**.



Participants by Role



	Events	Participants
SEA	90	2,216
Fayette	261	16,588
Pulaski	82	1,696
KSD	14	401

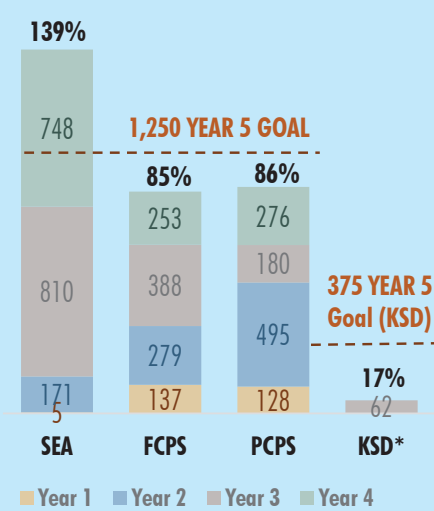
Enhancing Knowledge & Skills

Youth Mental Health First Aid (YMHFA) Training—In Year Four, **1,277** individuals completed the training.

Trauma Informed Care (TIC) for Educators Trainings, conducted in collaboration with the University of Kentucky's Center for Trauma and Children (CTAC), reached approximately **12,500 individuals**, two-thirds of whom were teachers.

Positive Behavioral Interventions and Support (PBIS) Training—**37 schools** have been trained and 22 of the 37 achieving fidelity in the implementation.

Youth Mental Health First Aiders Trained



TIC TRAINING

Fayette County
175 Teachers & school staff

Pulaski County
43 Teachers & school staff

Individuals trained by the U of K's Center on Trauma conducted training and workshops in other school districts across the state, reaching **2,230 teachers, school administrators, other school personnel, parents and community members**.

The majority of teachers and other school personnel in Fayette and Pulaski counties were trained in Grant Year 3, thereby reducing the numbers and the need in Year 4.

PBIS TRAINING

Fayette County—43 Events

Pulaski County—12 Events

KSD—2 Events

At the end of Grant Year Four, **37 schools within the three LEAs had been trained in PBIS** and 22 of the 37 were determined to be implementing PBIS with Fidelity.

Expanding Capacity—Creating Referral Systems

The LEAs have entered into **formal agreements** (contracts/Memorandum of Agreements) with **mental health and substance abuse professionals**.

Referrals* for mental health assessments and services have increased.

Mental Health and Substance Abuse Professionals

Fayette County Public Schools—97 licensed mental health professionals*

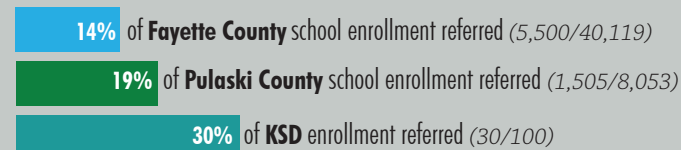
Pulaski County Public Schools—99 licensed mental health professionals*

KSD—1 licensed mental health professional*

*providing school-based mental health and substance abuse services

Referrals* for mental health assessments & services

Youth Referred & Engaged in Mental Health Services at the end of Year 4



(data on referrals may include duplications)

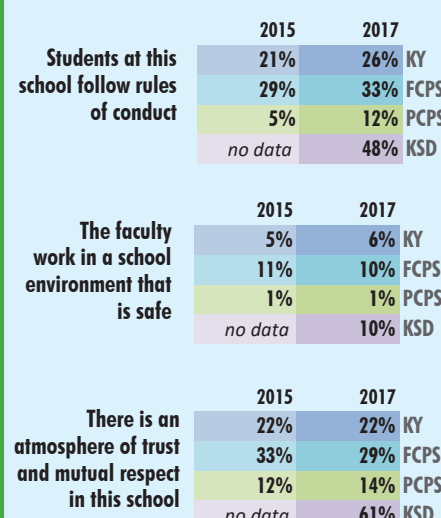
Improving Outcomes

Bullying and School Safety & Disciplinary Actions
School Report Cards (KDE)

School Environment
TELL Kentucky Survey of Teachers

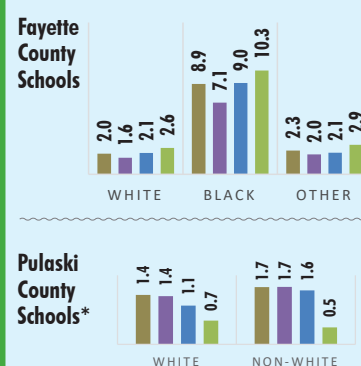
School Environment

Teachers Who Disagreed/Strongly Disagreed



School Safety (Harassment/Bullying)

Rates per 100 Students

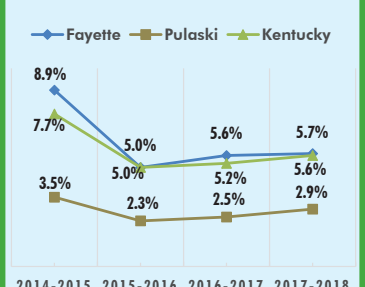


*Rates may be unstable for non-white students based on small numbers of students (n<10).

Disciplinary Actions

Percentage of Students with Out-of-School Suspensions

Out-of-School Suspensions



KSD data is not shown on this graph as KSD has only been involved with AWARE since 2016 and because rates within such a small student population are unstable.

TELL Kentucky

Kentucky Department of Education: School Report Cards

Kentucky AWARE is a 5-year grant project funded by the U.S. Department of Health and Human Services, Substance Abuse and Mental Health Services Administration (SAMHSA). Project activities are designed to: 1) increase student access to behavioral health services through improved coordination of state and local resources, and 2) train school personnel and other adults who interact with youth to detect and respond to mental health needs, including how to encourage adolescents and their families to seek and obtain treatment.